



Sussex Inlet has many events over the winter months including Winter@Sussex, Autumn Celebration of Food and the Viking Festival.
Visit: www.sussexinlet.nsw.au



Sussex Inlet has an amazing range of accommodation to suit your needs, from short mid week breaks, weekends and school holidays. The weather on the south coast is mild during winter so get away from the cold weather in Canberra or inland NSW and enjoy the beautiful beaches, lake and waterways of Sussex Inlet, Berrara, Cudmirrah and Swan Lake.
Visit: www.sussexinlet.nsw.au/stay



Sussex Inlet is a RV friendly town with over 100 visitor caravan and camping options- Lakeside, Surfside, Holiday Haven, Talofa and Badgee Park have great visitor spots for you and the family to enjoy or organise your caravan club.
Visit: www.sussexinlet.nsw.au/caravans-rv-and-camping



Lots of choices for food while your staying at Sussex Inlet with all cafes serving breakfast and lunch and dinner options at Sword Fish Brewery, Pelican Shores, RSL, Bowling Club, Wicked Bites, The Tavern, Silver Spoon Thai, Inlet Pizza and Cuddy Cafe.
Visit: www.sussexinlet.nsw.au/eat



Great shopping experiences while your enjoying your winter break – homewares and gifts, surf, speciality shops.
Visit: www.sussexinlet.nsw.au/shop



Sussex Inlet Pontoons offers amazing half and full day pontoon tours exploring the inlet and waterways. Great for group bookings, enjoy lunch on the water.
Visit: www.sussexinletpontoons.com.au



Lots to do while staying in Sussex Inlet - Live music at RSL or Bowlo on weekends, see a movie at historic Cinema, enjoy the aquatic centre, hire a boat and enjoy some fishing, kayaking and SUPs, bike riding and walks.
Visit: www.sussexinlet.nsw.au/things-to-do



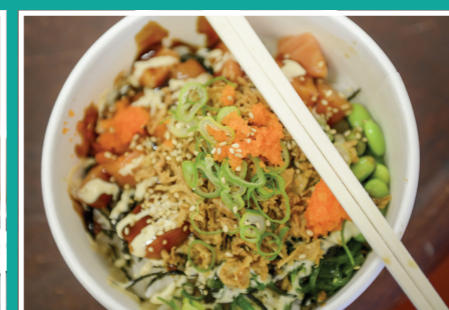
Explore Shoalhaven - Sussex Inlet is located centrally to give you a base to explore other parts of Shoalhaven with the villages Milton, Mollymook, Berry and Huskisson a short drive away.
For more Info on the Shoalhaven visit: www.shoalhaven.com

Winter AT SUSSEX

Food, Fun and Music

26th May to 24th September

Come along and enjoy 'Winter at Sussex' with a great range of food, music events and local activities



An initiative of the Sussex Inlet District Chamber of Commerce
Proudly supported by Shoalhaven City Council

Sussex Inlet District
CHAMBER OF COMMERCE INCORPORATED

Shoalhaven
City Council

For more info visit: www.sussexinlet.nsw.au/winter-at-sussex
For enquiries - email: sussexinletchamberofcommerce@gmail.com



May Music and Food Events for 'Winter at Sussex'

Event Name	Venue	Date and Time	Event Details	Bookings
Autumn Celebration of Food	60 events across the Shoalhaven	From 1st May to 11th June	 Shoalhaven Food Network Autumn is food celebration in the Shoalhaven with amazing food events	www.shoalhavenfoodnetwork.com.au/what-s-on
Winter@Sussex Launch	Swordfish Brewing	Thursday 11th May at 5pm - 6pm. Then book for dinner	 A Chamber of Commerce Members Event. Join us for a drink to launch the Winter @ Sussex campaign and then stay for dinner with chamber members at Swordfish Brewing.	RSVP: sussexinletchamberofcommerce@gmail.com
Trivia @ The Bowlo	Sussex Inlet Bowling Club	Every Wednesday - 6:30pm to 8:30pm	A fun night with family and friends, get a table for trivia and have dinner at 22nd End Restaurant	www.sussexbowlo.com.au
Celebrate Seafood @ Sussex	Pelican Shores Café	Saturday 13th May 6-9pm	 Shoalhaven Food Network Bring your friends and family and enjoy a wonderful night of seafood and music with fresh prawns, oysters, fish, squid and scallops	info@pelicanshorescm.com.au
Island Sushi Picnic by the Lake	Island Sushi at Lakeside	Sunday 14th May - 11am - 2pm	 Shoalhaven Food Network Experience a sushi picnic on Mothers Day with Island Sushi overlooking picturesque Swan Lake. Island Sushi will tantalise your taste buds and have you wanting to come back for more.	Booking not required but come early Island Sushi is very popular. Poke Bowls from \$16
Comedy @SwordFish	Swordfish Brewing	Sunday 14th May Dinner from 5pm - Comedy 7:30pm	 Enjoy dinner at Swordfish and then a night of comedy	Book table for dinner @ www.swordfishbrewing.com.au
Music @Cinema & Dinner@SwordFish	Sussex Inlet Cinema and Swordfish Brewing	Sunday 28th May Music 4:30-6:30pm - Dinner 6:45-9pm	 On arrival be greeted with a glass of wine or beer and a cheese platter. Enjoy the music of Glen Whitehall in the historic Sussex Inlet cinema. Followed by fixed price 2 course dinner at Swordfish Brewing.	www.sussexinlet.nsw.au/winter@sussex



June Music and Food Events for 'Winter at Sussex'

Trivia @ The Bowlo	Sussex Inlet Bowling Club	Every Wednesday - 6:30pm to 8.30pm	A fun night with family and friends get a table for trivia and have dinner at 22nd End Restaurant	www.sussexbowlo.com.au
Fresh Food Feast for Sussex Seniors	Russ Murray Lodge Autumn Celebration of Food Pop Up Restaurant	Monday 5th June 12-3pm	 Shoalhaven Food Network Enjoy a three course lunch inspired by Maggie Beer recipes for older people. Includes Wine or beer with lunch. Sponsored by Inasmuch, Sussex Bowling and RSL Club - \$15 per head	To book Phone: 02 4480 3034 Email: reception@inasmuch.org.au
High Tea @Inlet Eats	Inlet Eats	Tuesday 6th June 10am - 2:30pm	 Shoalhaven Food Network High Tea Event - As part of Autumn Celebration of Food	To Book Phone: 02 4480 3043 Email: inleteats@gmail.com
Viking Festival	Ellmoos Reserve - Sussex Inlet	Saturday 10th June 9am - 7pm	Food stalls, concert, traditional viking village, kids zone, beer gardens Tickets - Adult- \$25 - Child- \$20 - Family- \$80	To buy tickets – www.vikingfestival.com.au
Viking Long Lunch	Swordfish Brewing	Sunday 11th June 12pm - 4pm	3 course long lunch for 250 - tables of 10	To buy tickets – www.vikingfestival.com.au SOLD OUT
Music @Cinema & Dinner @Swordfish	Sussex Inlet Cinema Followed by dinner at Swordfish Brewing	Sunday 25th June - 4:30pm at cinema dinner at SwordFish from 6:45pm	 On arrival be greeted with a glass of wine or beer and a cheese platter. Enjoy the music of the Jeremy Sawkins Jazz Trio in the historic Sussex Inlet cinema. Followed by fixed price 2 course dinner at Swordfish Brewing. Cost: Music-\$20 - Dinner: \$50	www.sussexinlet.nsw.au/winter-at-sussex
Comedy@SwordFish	Swordfish Brewing	Sunday 18th June Dinner from 5pm Comedy at 7:30pm	 Enjoy dinner at Swordfish and then a night of comedy	Book table for dinner www.swordfishbrewing.com.au

July/August Music and Food Events for 'Winter at Sussex'

Comedy @ Cinema	Sussex Inlet Cinema followed by dinner at Swordfish	30th July	 On arrival be greeted with a glass of wine or beer and a cheese platter. Enjoy an evening of comedy with Mc - Andy High in the historic Sussex Inlet cinema. Headliner - Spud Murphy, Support - Peter Green, followed by fixed price 2 course dinner at Swordfish - Comedy \$20 and Dinner \$50	www.sussexinlet.nsw.au/winter-at-sussex
Music @ Cinema	Sussex Inlet Cinema followed by dinner at Sword Fish	Sunday 27th August Music 4:30 - 6:30pm Dinner at Sword fish 6:45pm	 On arrival be greeted with a glass of wine or beer and a cheese platter. Enjoy the music of Andy Penkow in the historic Sussex Inlet cinema. Followed by fixed price 2 course dinner at Swordfish Brewing. Cost: Music-\$20 - Dinner: \$50	www.sussexinlet.nsw.au/winter-at-sussex

September Music and Food Events for 'Winter at Sussex'

Music@Cinema & Dinner @ Swordfish	Sussex Inlet Cinema followed by dinner at Sword Fish Brewing	Sunday 24th Sept 4:30pm at cinema dinner at Sword Fish from 6:45pm	 On arrival be greeted with a glass of wine or beer and a cheese platter. Enjoy the music of Peter Hughes in the historic Sussex Inlet cinema. Followed by fixed price 2 course dinner for at Swordfish - Cost: Music: \$20 - Dinner: \$50	www.sussexinlet.nsw.au/winter-at-sussex
Winter@Sussex Celebration of Dance - FREE	Thomson Street Hall at Sussex Inlet	Saturday 24th September 10am - 3pm	 If you love dance then come along to enjoy our Celebration of Dance. Enjoy a picnic lunch, music and food vans. Chris Edwards School of Dance, salsa and line dancing. Demonstrations and opportunities for short workshop.	www.sussexinlet.nsw.au/winter-at-sussex